



Commercial[®] 95 340

Architectural Shade Fabric

TENSION STRUCTURES

AWNINGS

SHADE SAILS



GALE
P A C I F I C

Commercial[®] 95 340

Architectural Shade Fabric



Gale Pacific's Commercial 95[®] 340 Architectural Shade Fabrics is designed for tension structures and shade sails, it is used on a wide variety of applications. It offers the ultimate combination of **maximum sun protection, strength and durability** to ensure maintenance-free long-life performance.

Engineered in Australia, Commercial 95[®] 340 is made from high-quality UV-stabilised HDPE. Strong and stable, it's suitable for harsh Australian conditions. It's 100% lead and phthalate-free, and we're proud to state it is the first architectural shade cloth in the world to be granted Oeko-Tex[®] 100 and Greenguard[®] certification.



- Knitted lock-stitch construction for fray and tear resistance, offers more air movement and better channeling of cool breezes
- UV-stabilised HDPE monofilament and tape yarn provides optimal balance between strength and UV block, with easy fabrication and minimal maintenance
- Stentered (heat set) for prevention of shrinking and ease of fabrication
UV Block range 91.1% - 95.5% reduces sun exposure for safe and extended time outdoors
- Full 10-year UV degradation warranty on fabric
- 100% lead and phthalate free for a healthier environment
- Greenguard[®] and Oeko-Tex[®] certified provides confidence in operational quality assurance
- Engineered in Australia for the harshest conditions
- 100% recyclable

Properties

| | |
|---------------------|-------------------------------|
| Nominal fabric mass | 340gsm ± 20 |
| Roll length (m) | 40 (folded) 100 (unfolded) |
| Roll width (m) | 3 |

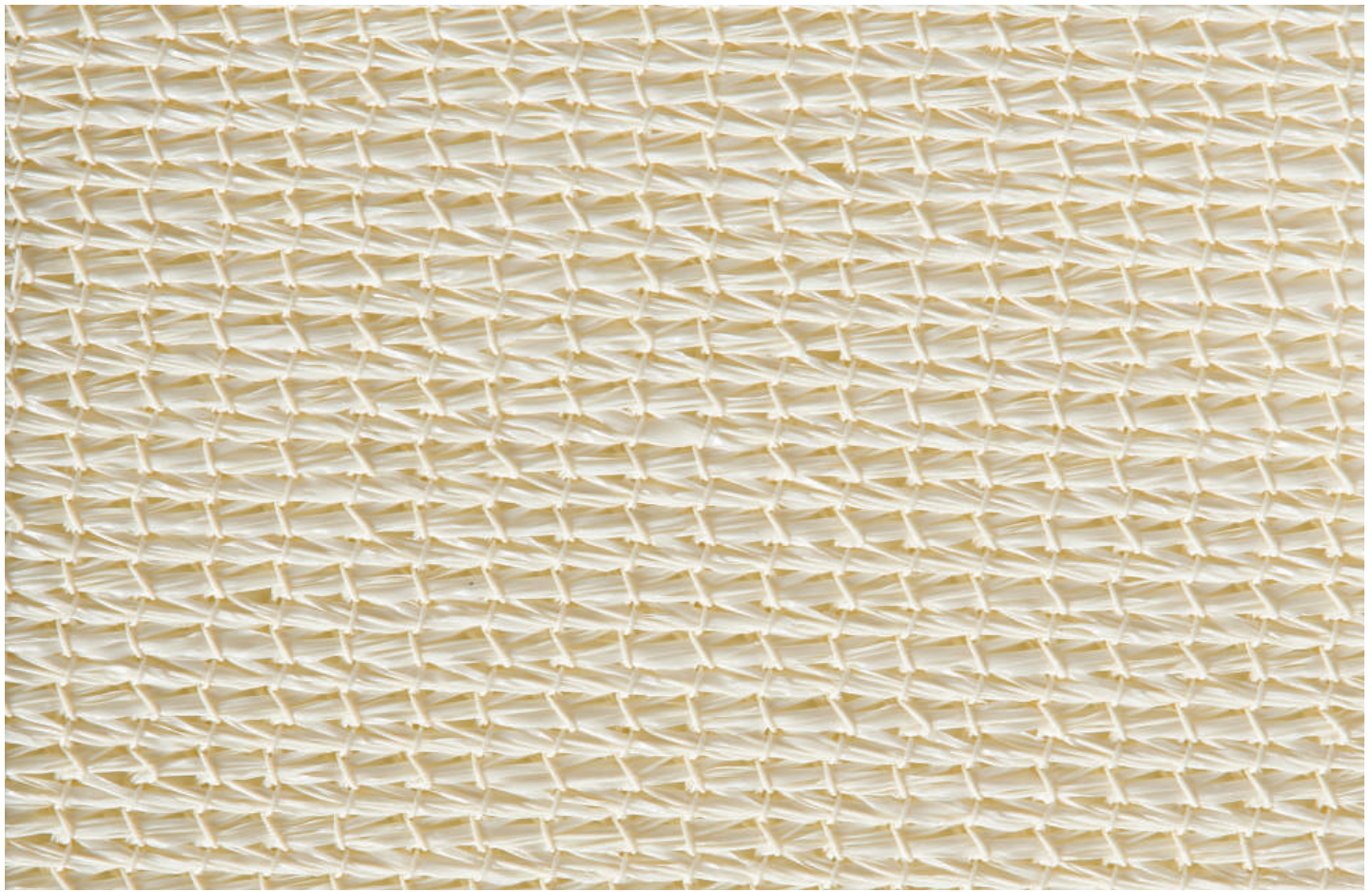
Performance

| | |
|---------------------------------|-------------|
| Maximum force - warp (mean) | 670 N/50mm |
| Elongation at max. force (mean) | 117% |
| Maximum force - weft (mean) | 2400 N/50mm |
| Elongation at max. force (mean) | 83% |
| Breaking force - warp (mean) | 990 N |
| Breaking force - weft (mean) | 2000 N |
| Wing tear - warp (mean) | 184 N |
| Wing tear - weft (mean) | 347 N |
| Bursting pressure (mean) | 3500 kPa |
| Bursting force (mean) | 1937 N |
| Flammability index | 12 |

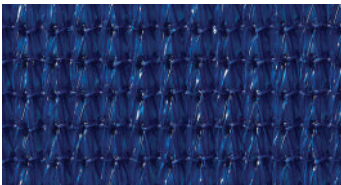
Applications

- Tension structures
- Awnings
- Shade sails
- Car Park structures

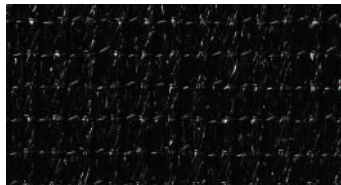




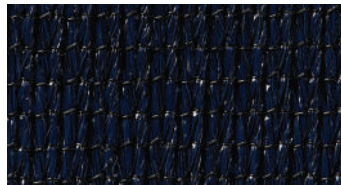
Natural 445003 | 483951
93.1% UVR Block



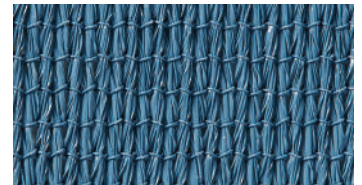
Aquatic Blue 444938 | 483937
91.1% UVR Block



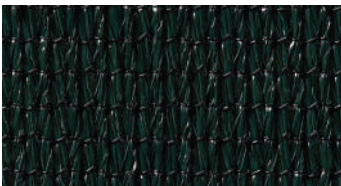
Black 444945
94.8% UVR Block



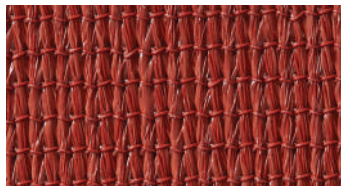
Navy Blue 445010
94.4% UVR Block



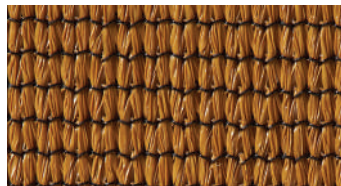
Sky Blue 445034
92.2% UVR Block



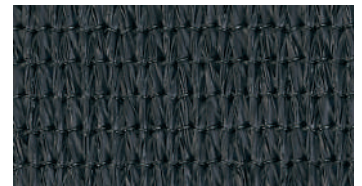
Brunswick Green 444952 | 483975
94.7% UVR Block



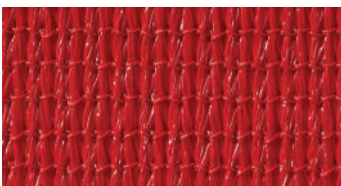
Cayenne 455255
92.4% UVR Block



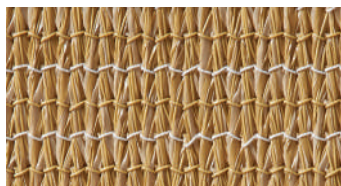
Cedar 465360
93.6% UVR Block



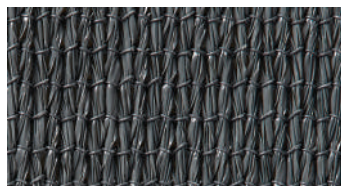
Charcoal 444969
93.4% UVR Block



Cherry Red 444976
91.2% UVR Block



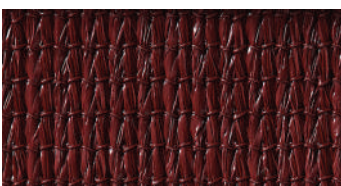
Desert Sand 444983 | 483845
93.8% UVR Block



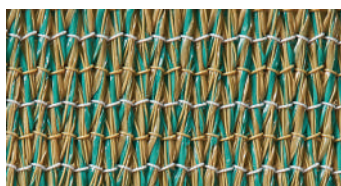
Gun Metal 455262 | 483944
93.2% UVR Block



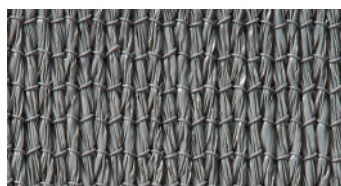
Yellow 445072
95.5% UVR Block



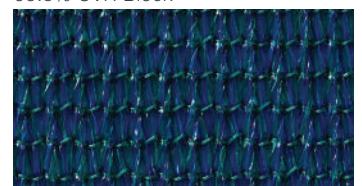
Deep Ochre 444990
94.6% UVR Block



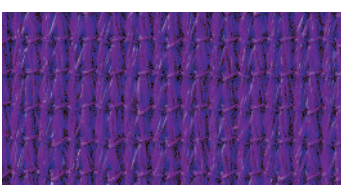
River Gum Green 445027
92.9% UVR Block



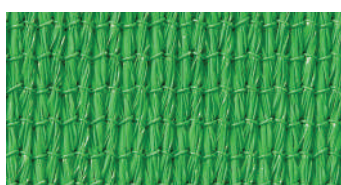
Steel Grey 445041 | 483968
94.3% UVR Block



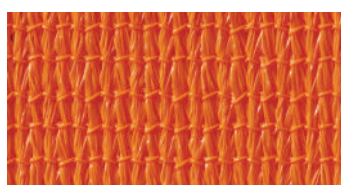
Turquoise 445065
91.5% UVR Block



Royal Purple 459185
91.1% UVR Block



Bright Green 459215
92.5% UVR Block



Orange 459208
94.0% UVR Block



galecommercial.com

AU P 1800 331 521

NZ P 0800 555 171

UAE P +971 4 881 7114

USA P 1800 560 4667